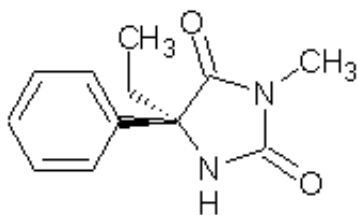


## Product Information Sheet

### S-(+)-mephentermine

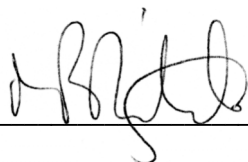
Catalogue Number: CYP532-5  
 Amount: 5 mg  
 Molecular formula: C<sub>12</sub>H<sub>14</sub>N<sub>2</sub>O<sub>2</sub>  
 Molecular weight: 218.25  
 Storage: Store at 2 – 8°C.  
 Intended Use: For laboratory (research) purposes only. Not for drug or human use.

Structure:



Batch Number: 532001  
 Analysis Date: 12<sup>th</sup> December 2010  
 Purity: 98.02%  
<sup>1</sup>H-NMR: Conforms

Approved by \_\_\_\_\_



Date 28<sup>th</sup> June, 2011

#### Safety Data

The toxicological properties of this reagent have not been investigated. Exercise due care when handling.

#### IMPORTANT DISCLAIMER

1. Products supplied by Cypex may be harmful if misused. Any product ordered from Cypex must not be used for any purpose other than the intended use specified on the Product Information Sheet which accompanies the product when delivered. Please ensure that products supplied by Cypex are used safely, and, in particular, that the products do not come into direct human contact.
2. Cypex undertakes that all products supplied by it shall conform to the specification appearing on the Product Information Sheet which accompanies the product when delivered. In the event that products supplied by Cypex fail to meet such specification, Cypex will supply replacement products free of charge provided that the defective products have been returned to Cypex within a reasonable time of delivery (Cypex will reimburse reasonable costs incurred in returning defective products), and this shall be the only remedy available in respect of the supply of any defective products.
3. Cypex gives no undertakings or warranties in respect of products supplied other than the undertaking given at 2, above. Furthermore, Cypex has given and gives no undertaking or warranty nor does it make any representation, directly or indirectly, express or implied, about the quality, character or suitability of products supplied by Cypex.
4. Cypex shall have no liability in respect of loss or damage (whether direct or indirect or in the nature of loss of profit) suffered as a result of the supply of products by Cypex, or the subsequent use, storage or other application of the products, whether or not the products meet the specification referred to at 2, above.