

MONOCLONAL ANTIBODY DATASHEET



Clone 3B8C1 against human CYP1A2

Product Description	Monoclonal antibody directed against human CYP1A2 (see below). Supplied as hybridoma supernatant (unpurified).
Storage	Store at -20°C . Avoid repeated freeze-thaw cycles.
Intended Use	For laboratory (research) purposes only.
Isotype	IgG1, κ
Clone	3B8C1
Immunogen	Rat cytochrome P450 proteins
B Cell Donor	BALB-c mouse
Fusion Partner	Ag 8563
Positive Control	IHC: formalin-fixed, paraffin-embedded normal liver sections. Western blot: recombinant P450 (shown below @ 0.5 pmol per lane).

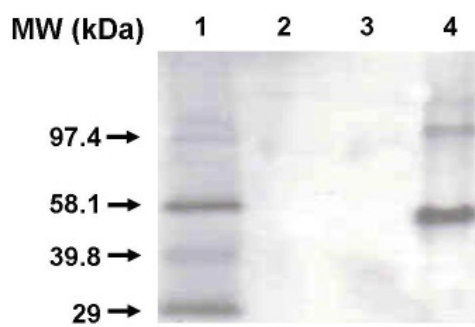
Applications		Recommended Usage Conditions (conditions should be optimised by the user)
ELISA	not tested	n/a
Western blot	✓	1/10 dilution
IHC	✓	1/5 dilution, antigen retrieval: microwave 20 min @ 800W in 10 mM citrate buffer, pH 6

Clinical significance	Results observed
Breast cancer	- CYP1A2 showed immunoreactivity in both normal breast and breast cancer tissues.

Reference	Murray G I, Patimalla S, Stewart K N, Miller I D & Heys S D (2010) Profiling the expression of cytochrome P450 in breast cancer. <i>Histopathology</i> . 57 : 202-211.
------------------	--

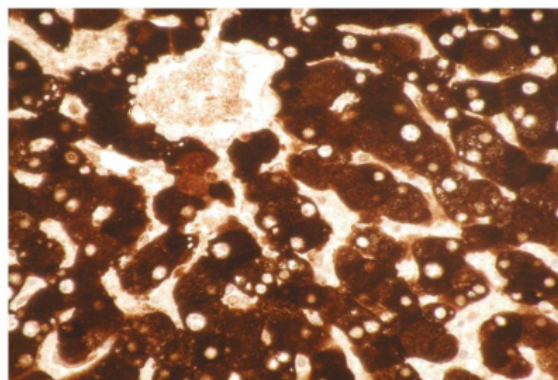
WESTERN BLOT								
1A1	1A2	1B1	2A6	2B6	2C8	2C9	2C18	2C19
-	+	-	-	-	-	-	-	-
2D6	2E1	4A11	4F2	3A4	3A5	3A7	liver	
-	-	-	-	-	-	-	+	
Reactivity with recombinant CYP proteins and liver cell lysate								

WESTERN BLOT OF RECOMBINANT CYP450s



1. markers 2. CYP1B1 3. CYP1A1 4. CYP1A2

IMMUNOHISTOCHEMISTRY



Antibody staining of normal liver tissue